

Income Differences and Interstate Human Capital Mobility

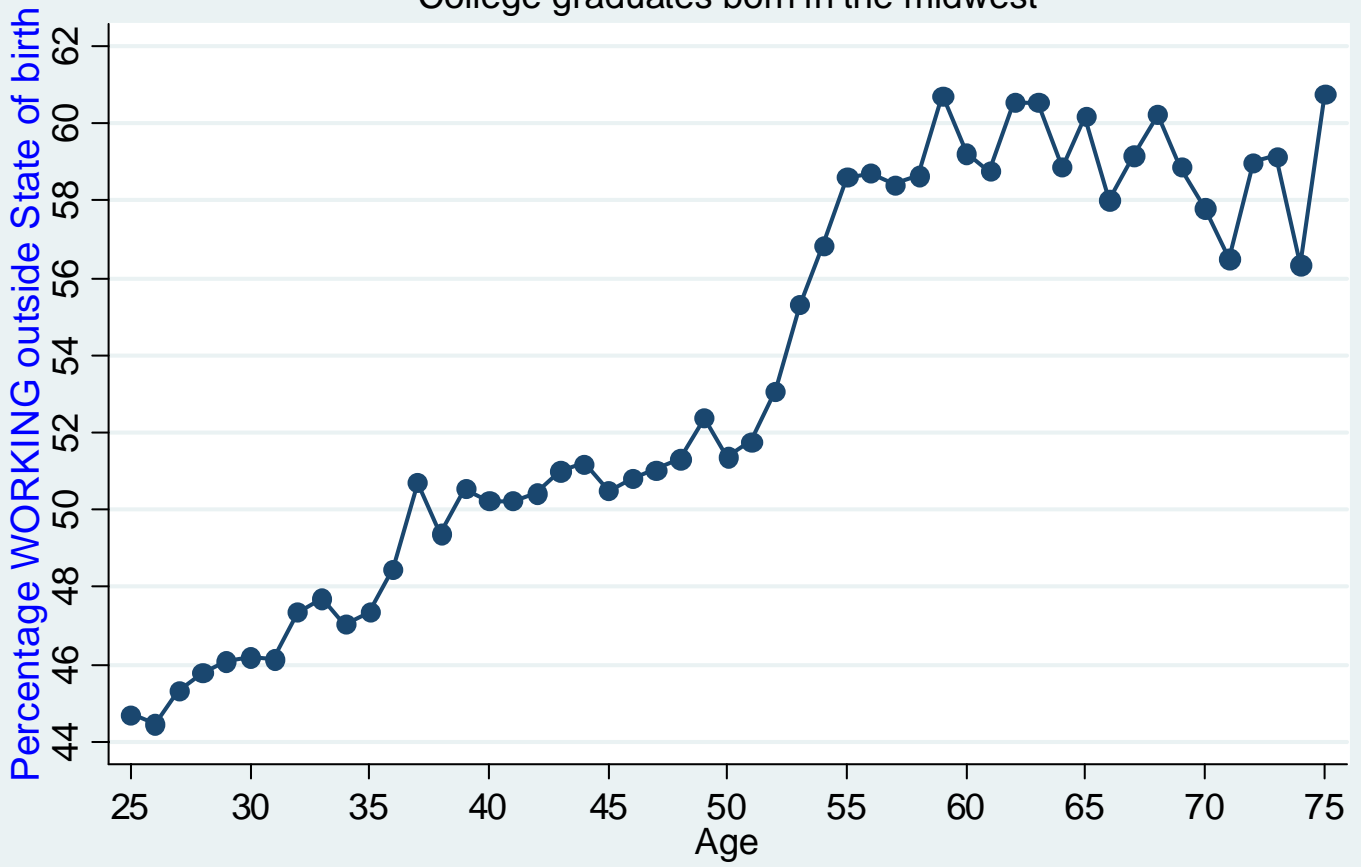
John Kennan
University of Wisconsin-Madison and NBER

(based on joint work with James R. Walker)

June 2008

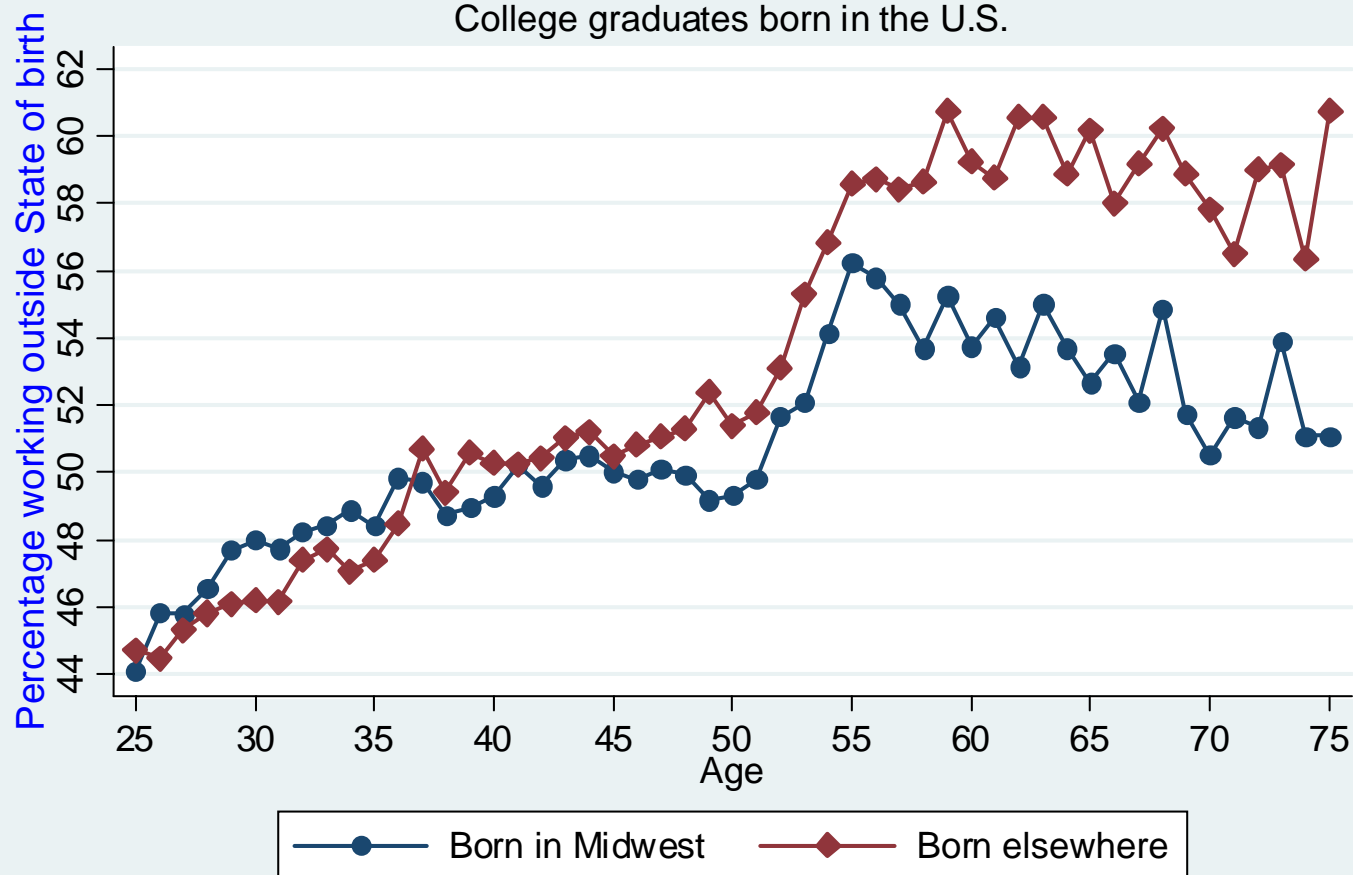
Mobility of Human Capital

College graduates born in the midwest



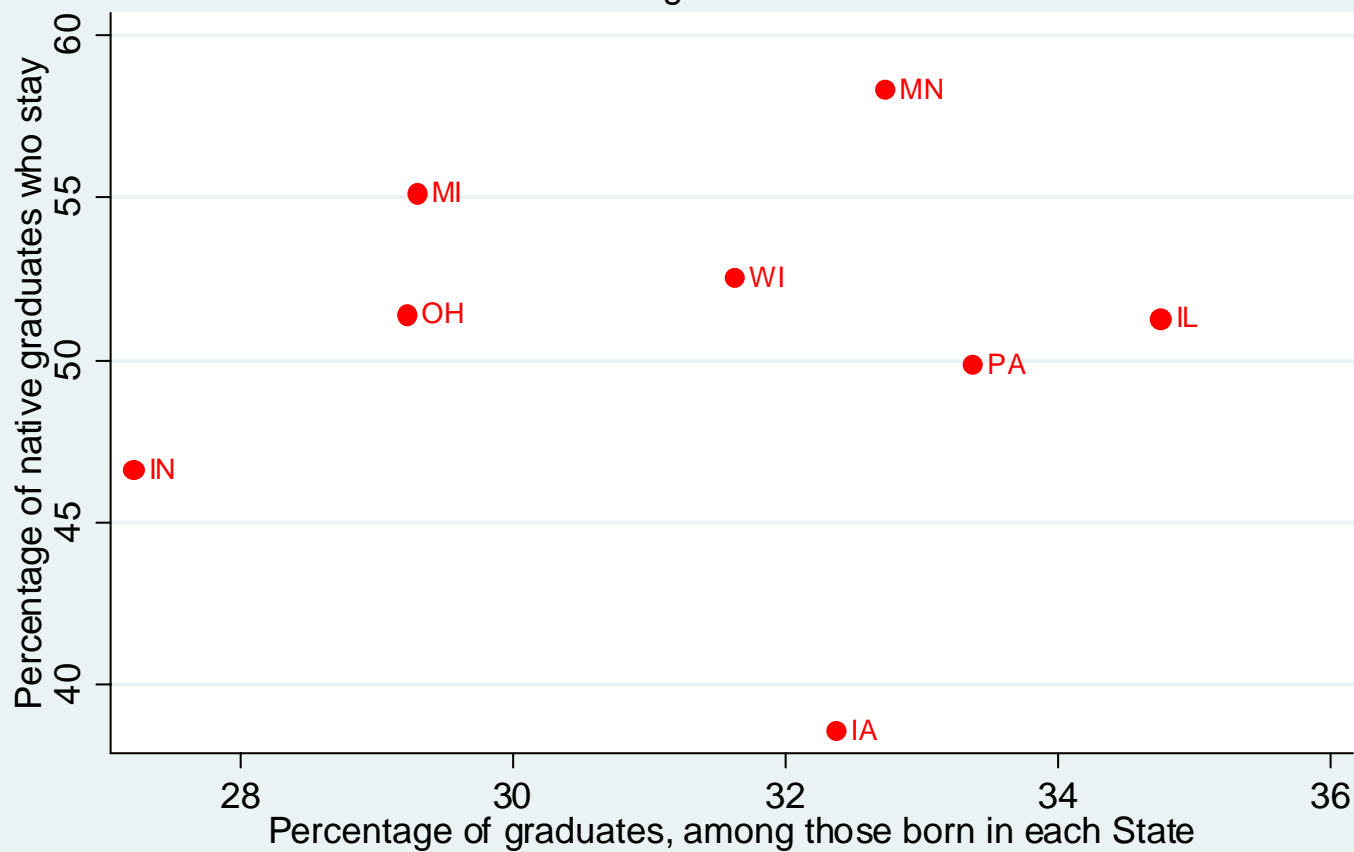
Mobility of Human Capital

College graduates born in the U.S.

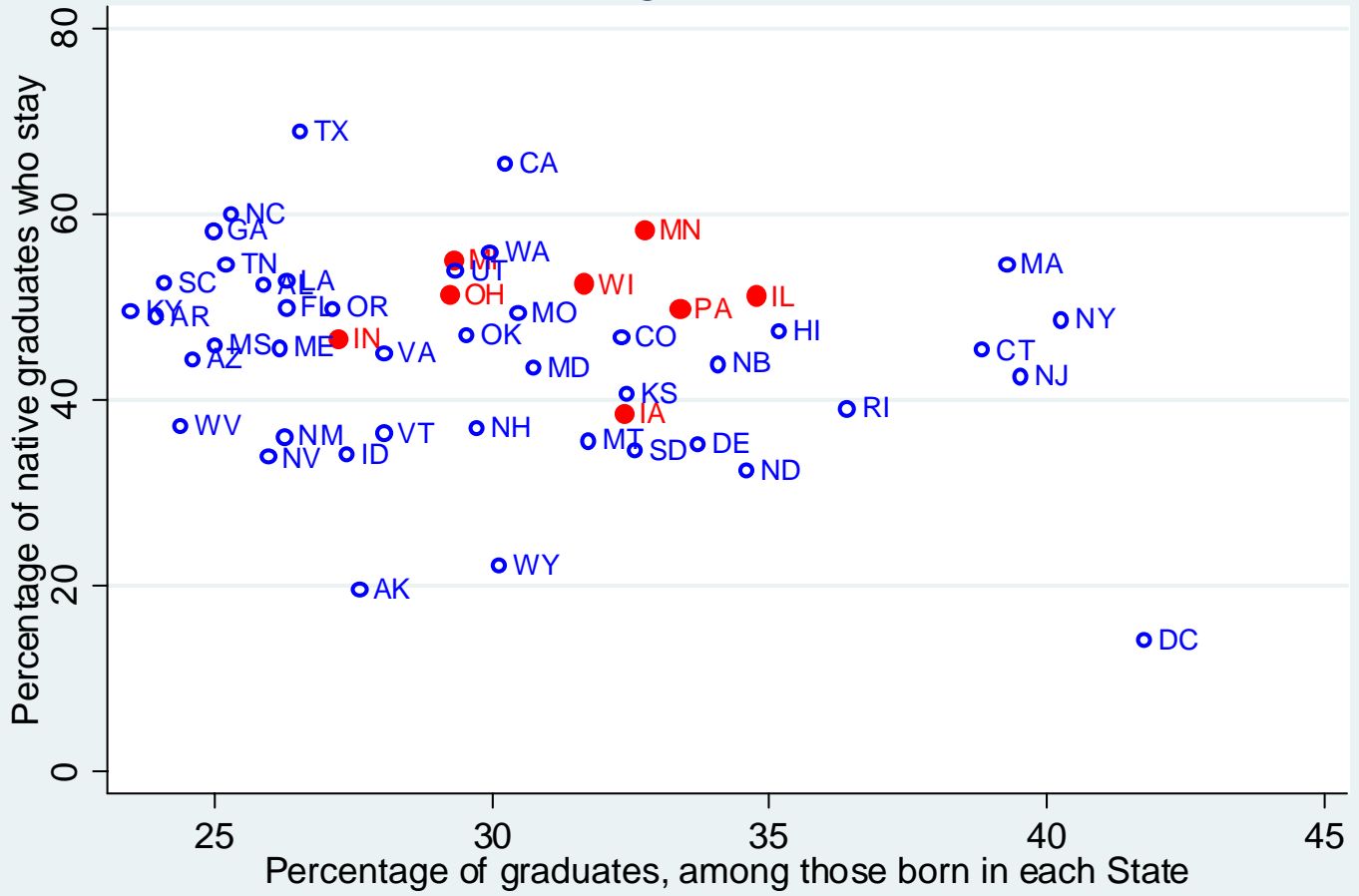


Midwestern College Graduates

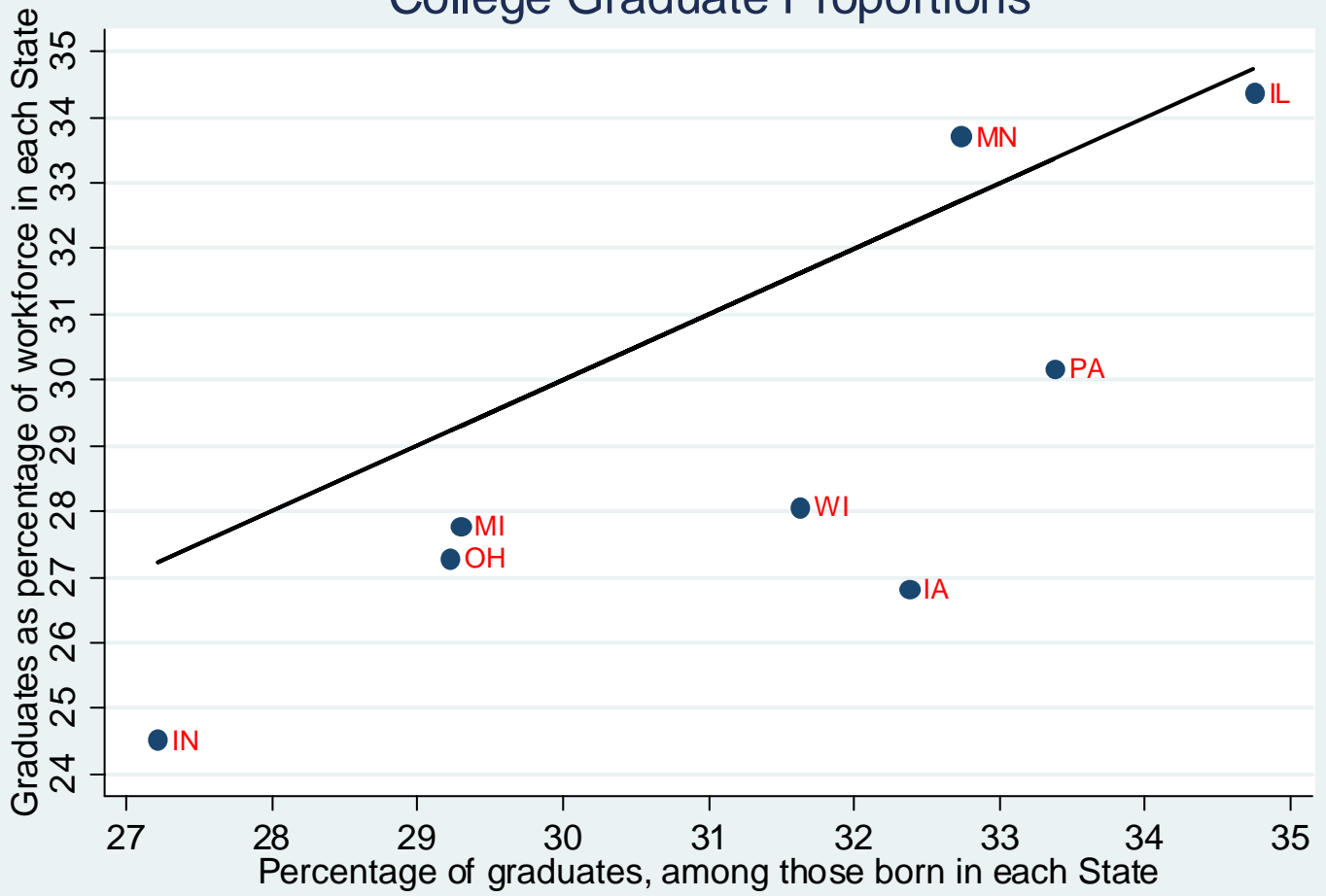
Ages 25-50



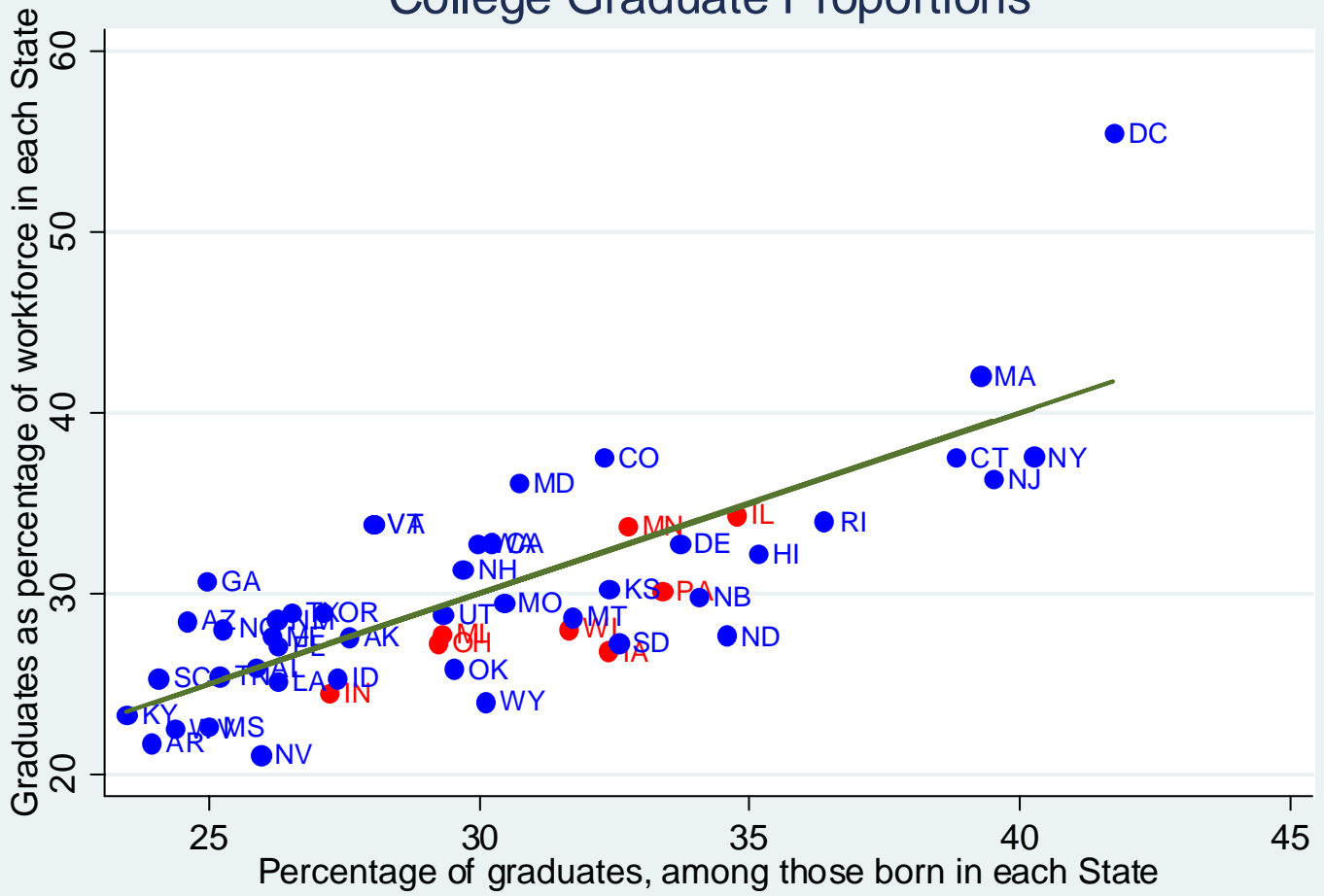
College Graduates



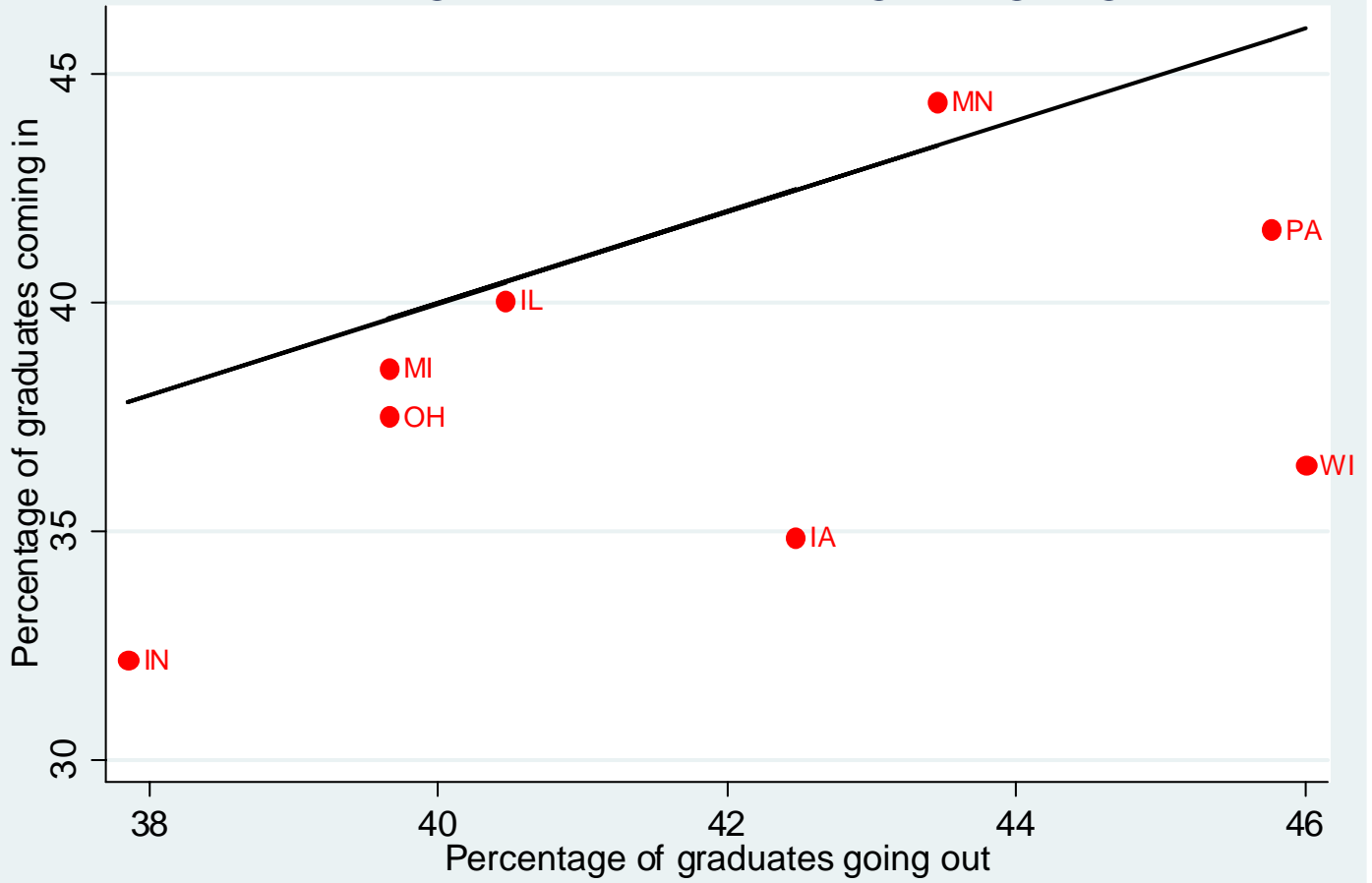
College Graduate Proportions



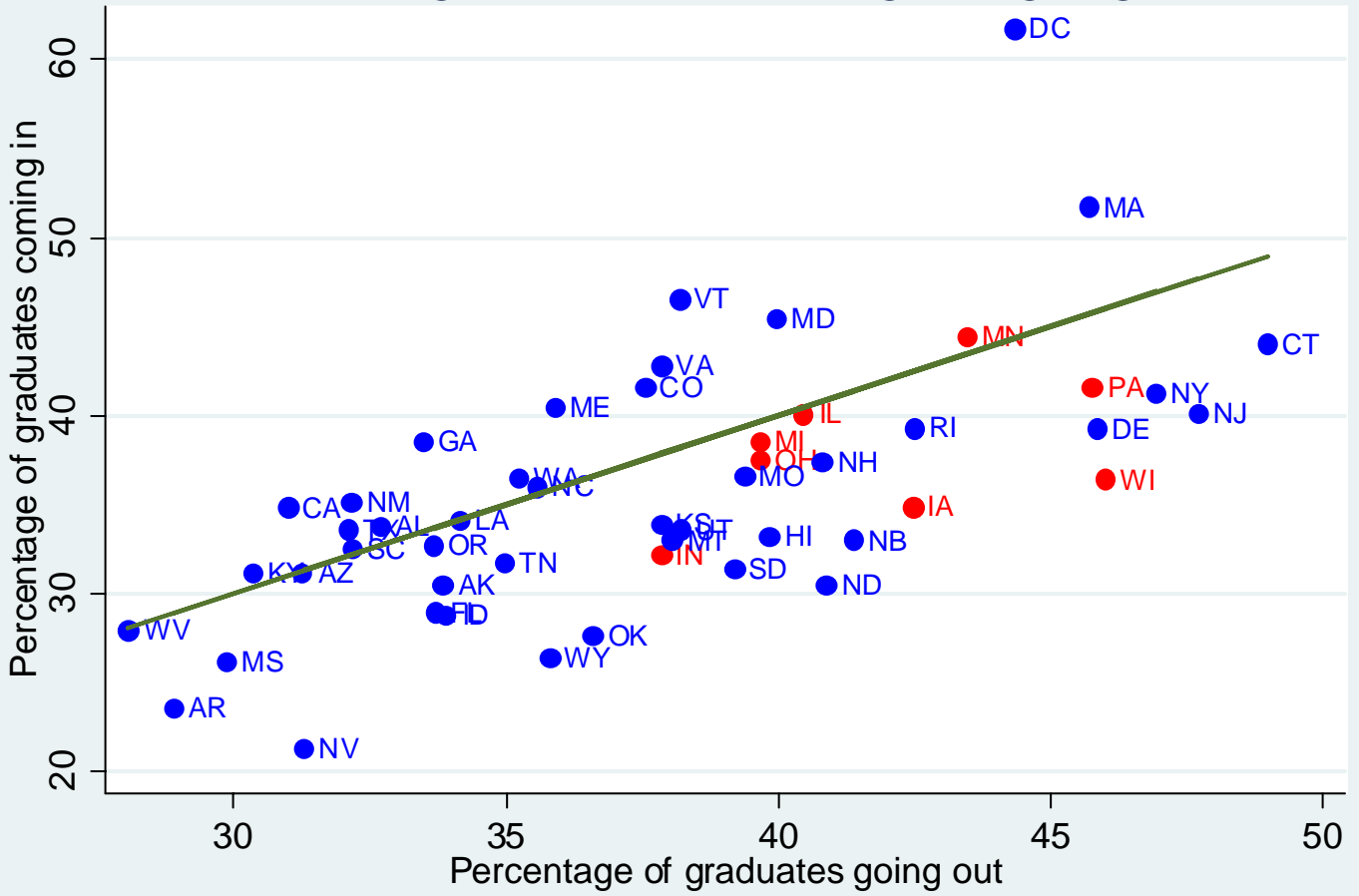
College Graduate Proportions



College Graduates coming and going



College Graduates coming and going



**Interstate Migration
NLSY, 1979-94**

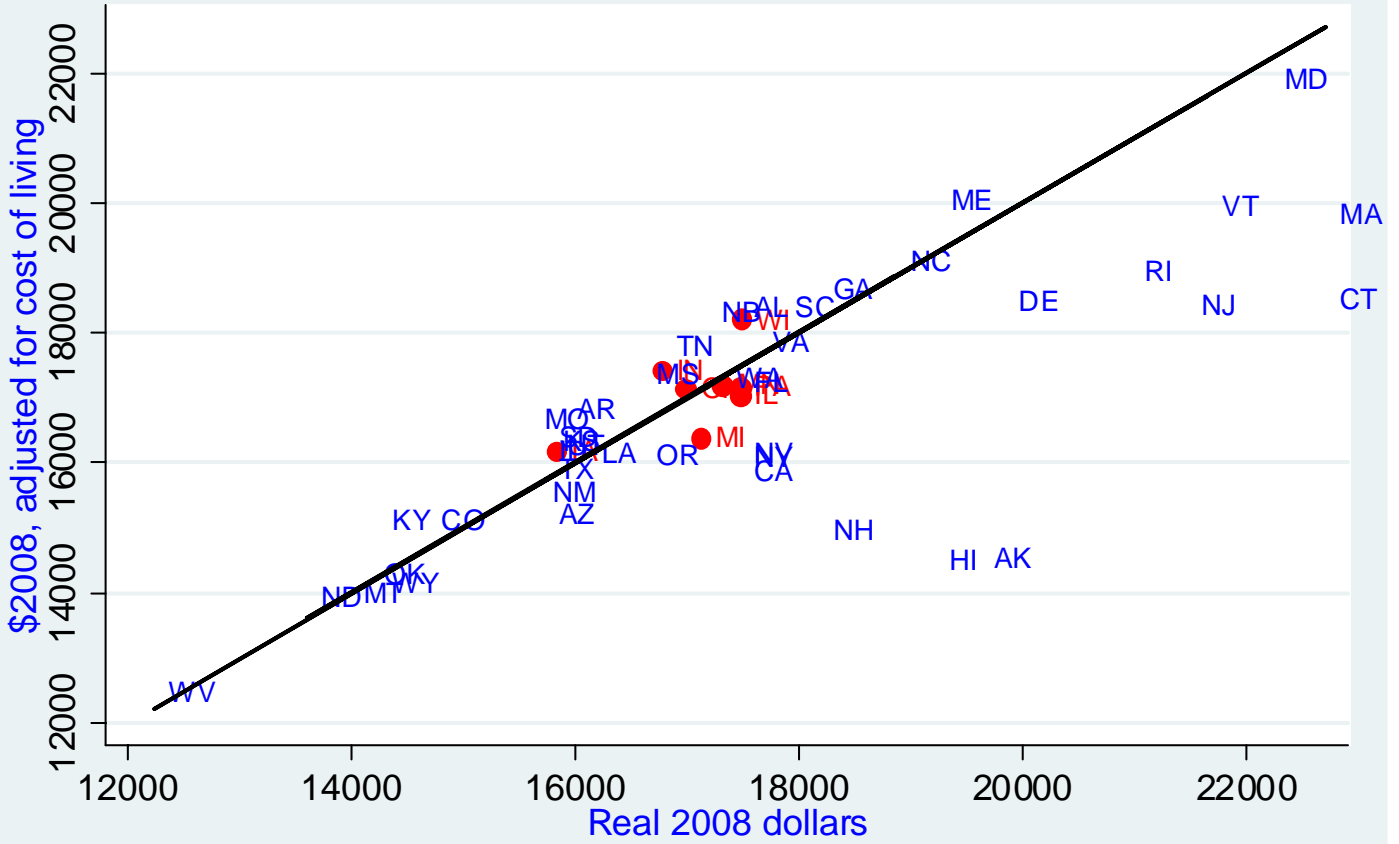
	Less than High School	High School	Some College	College	Total
Number of people	677	1576	1300	912	4465
Movers (age 18-27)	157	362	346	425	1290
Movers (%)	23.2%	23.0%	26.6%	46.6%	28.9%
Moves	312	707	678	848	2545
Repeat moves (% of all moves)	49.7%	48.8%	49.0%	49.9%	49.3%
Return Migration					
(% of all moves)					
Return - Home	34.3%	31.1%	30.1%	23.3%	28.6%
Return - not home	14.4%	7.9%	8.3%	8.3%	8.9%
Movers who return home (%)	61.1%	54.4%	52.9%	41.9%	50.7%

Notes:

The sample includes NLSY79 respondents who were continuously interviewed from ages 18 to 28, and who never served in the military. The home location is the State of residence at age 14.

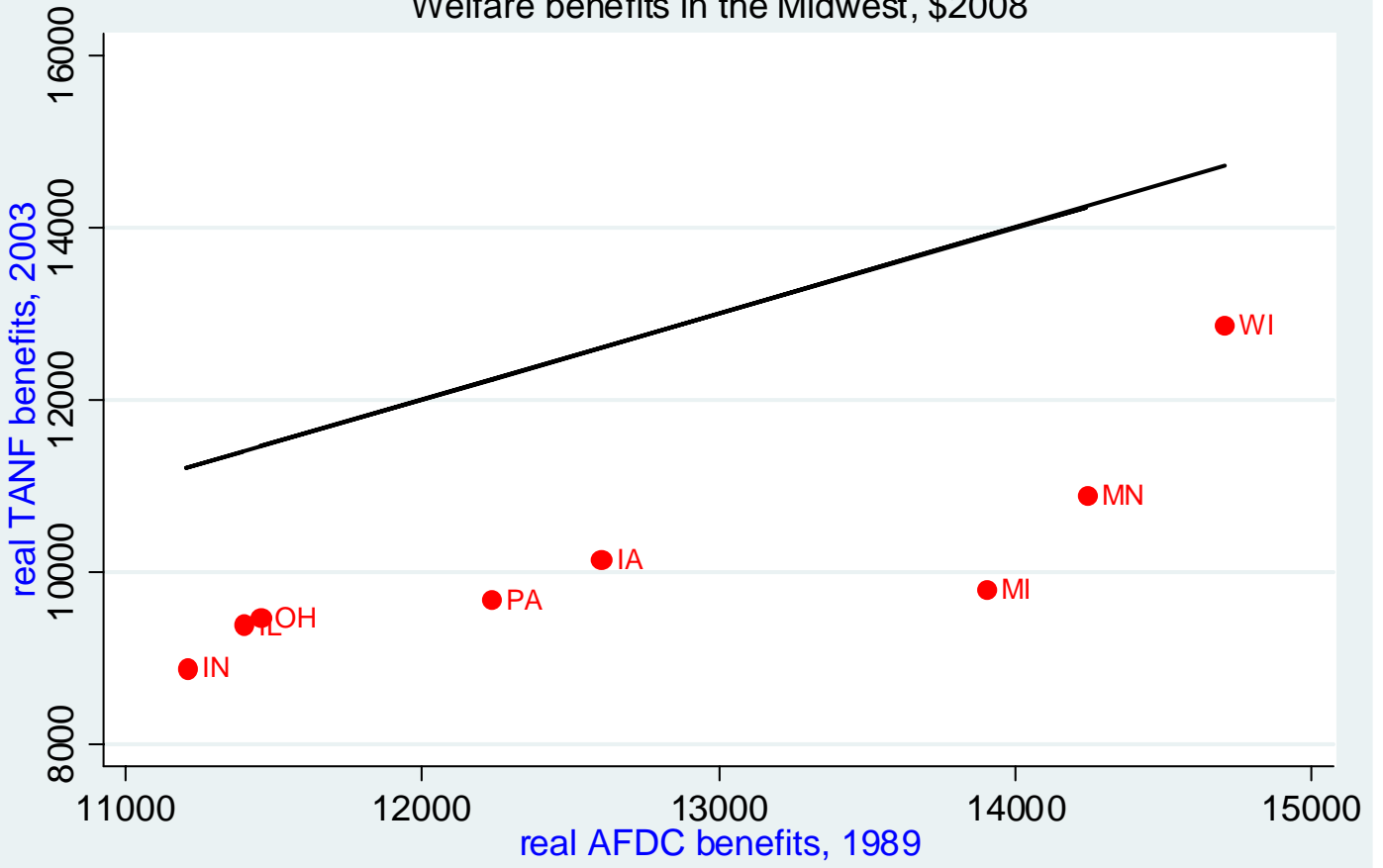
Incentives to Migrate

Annual Earnings, age 20, high school white men, 1989



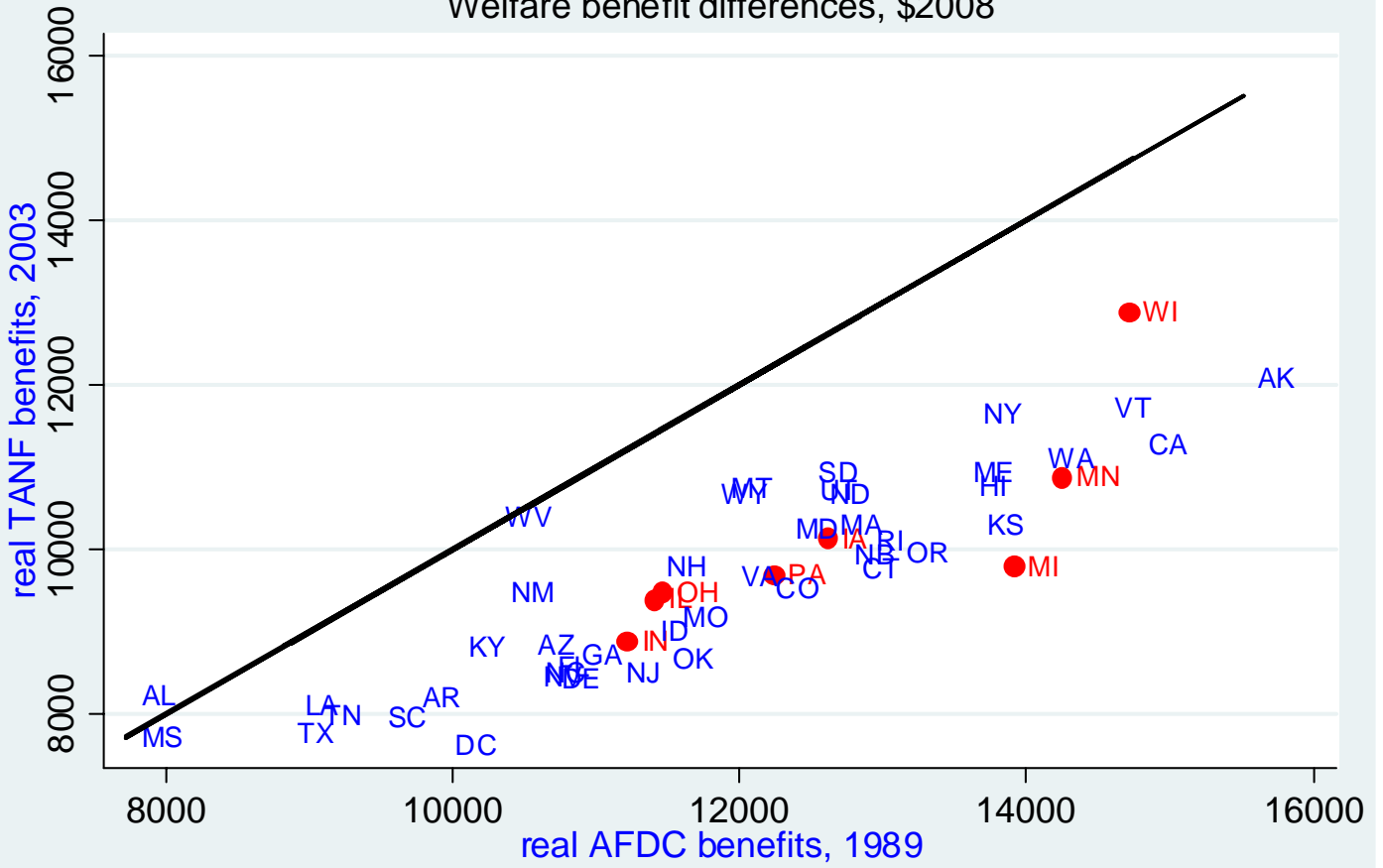
Incentives to Migrate

Welfare benefits in the Midwest, \$2008

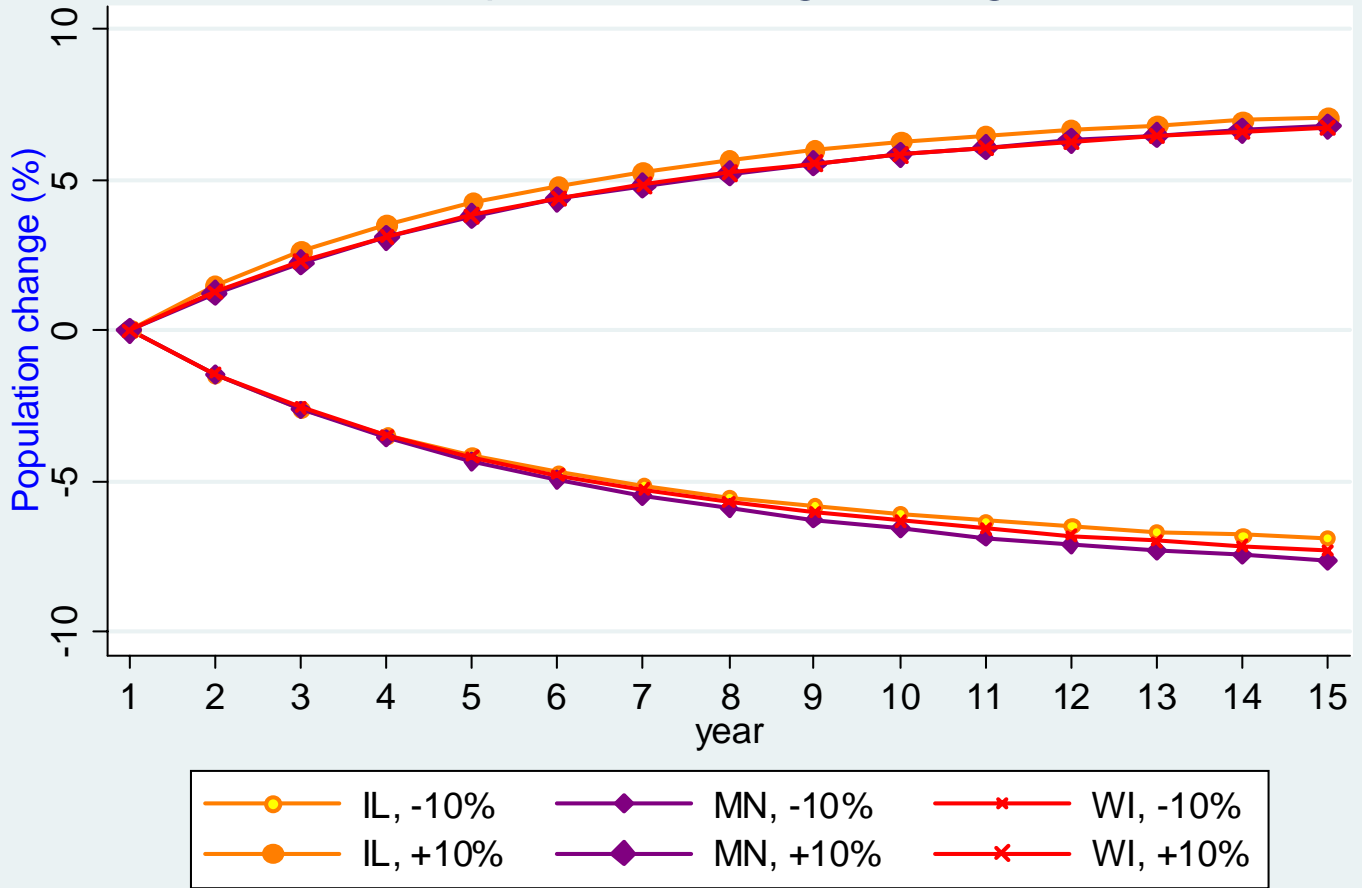


Incentives to Migrate

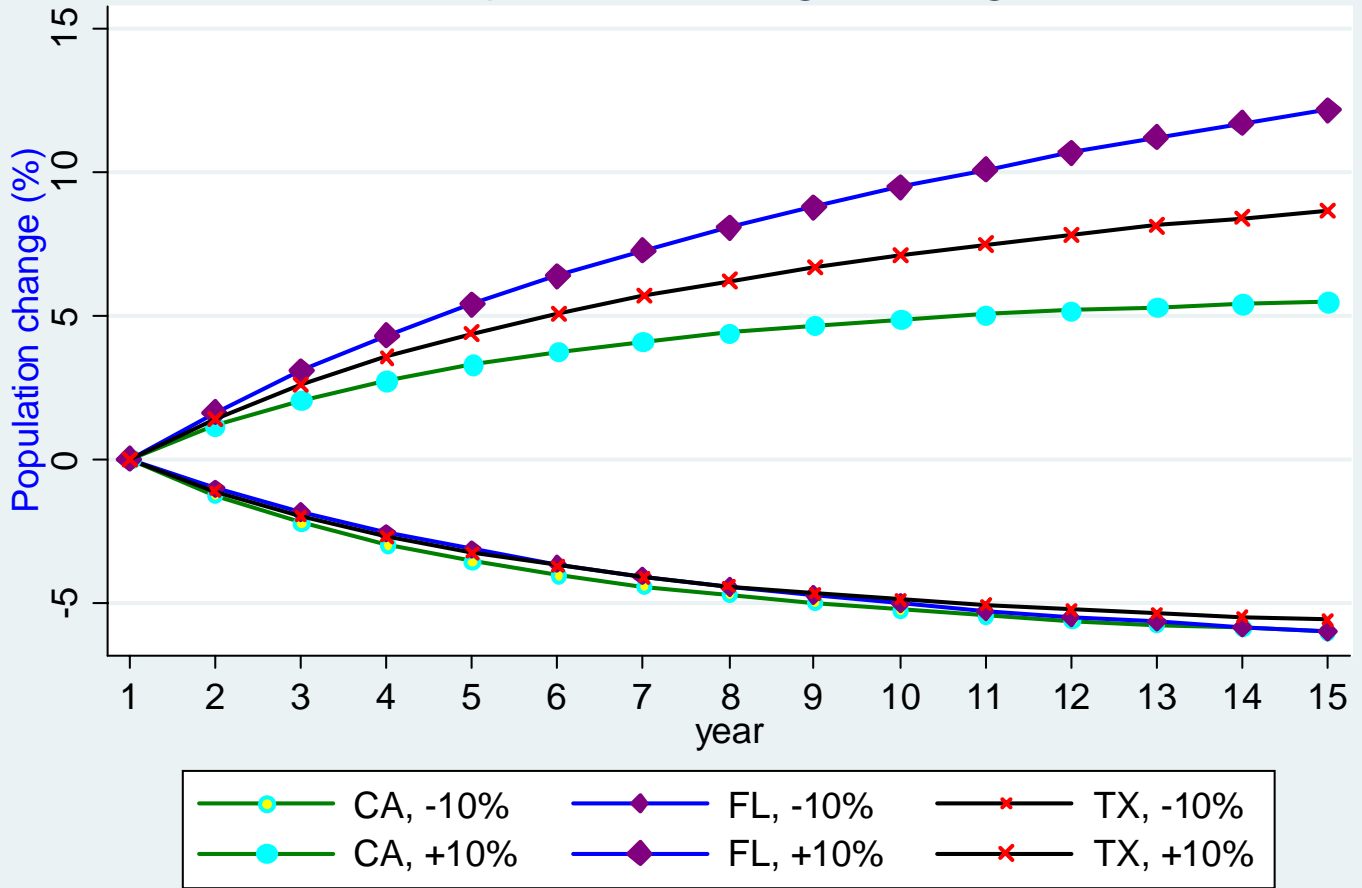
Welfare benefit differences, \$2008



Responses to Wage Changes



Responses to Wage Changes



Responses to Welfare Benefit Changes

